

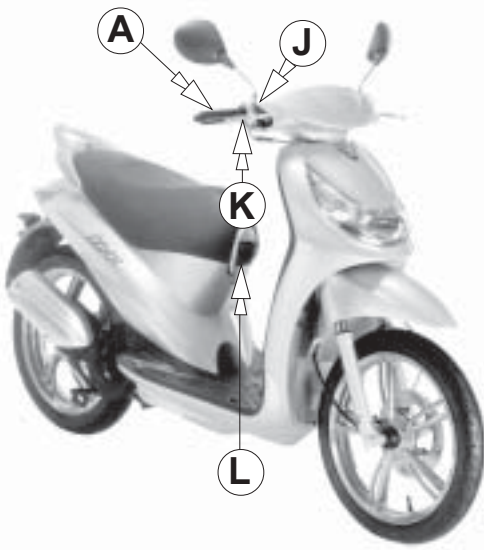
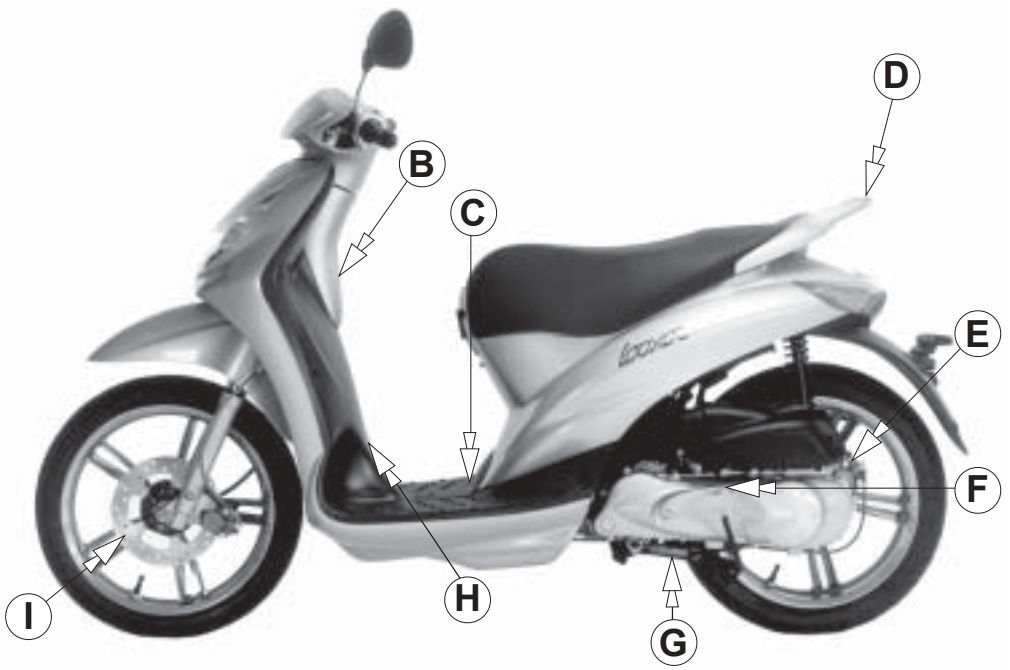


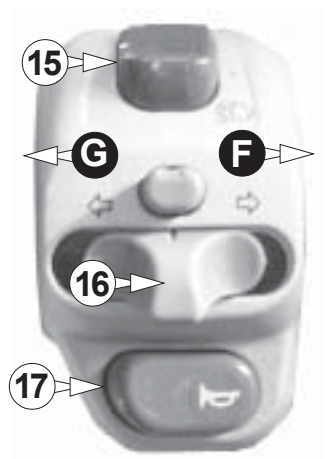
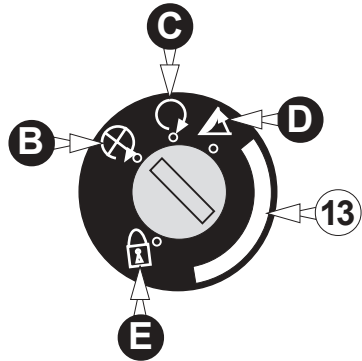
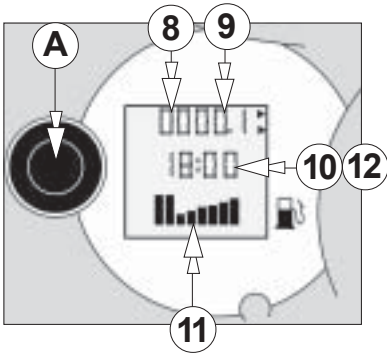
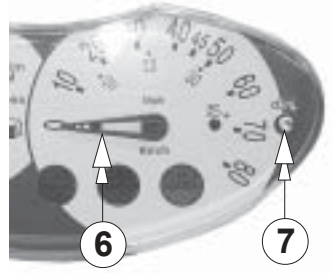
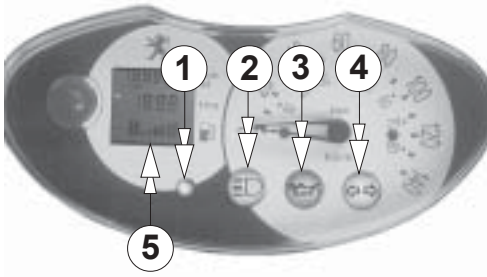
Looxor

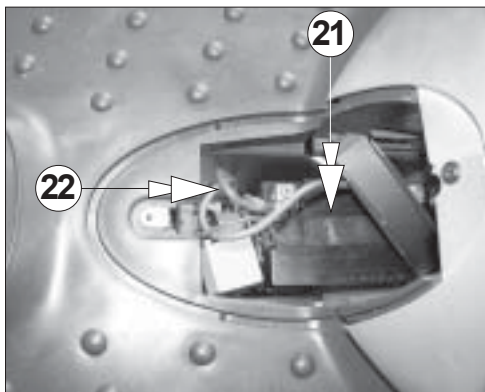
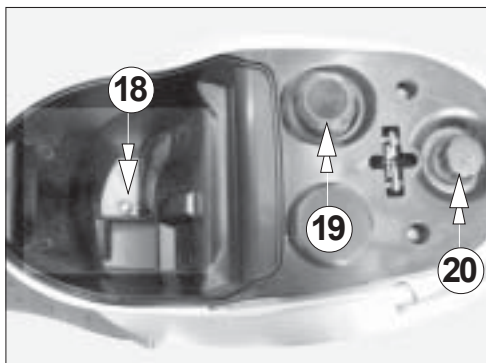


Owner's manual

50cm³ / 100 cm³



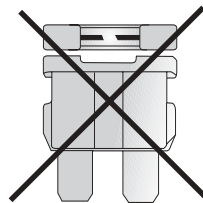
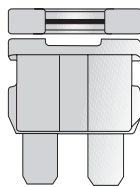




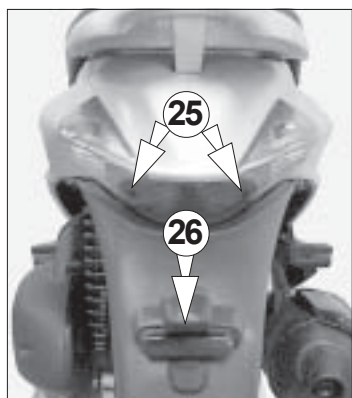
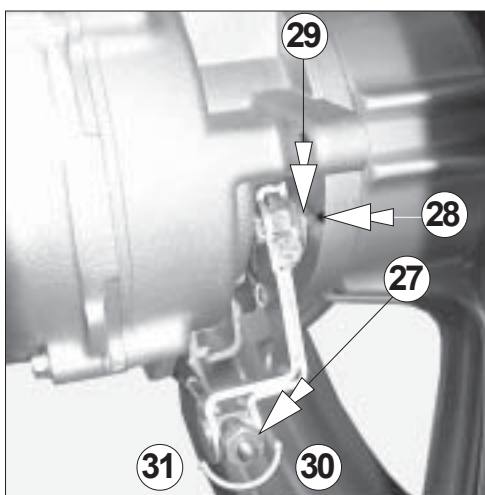
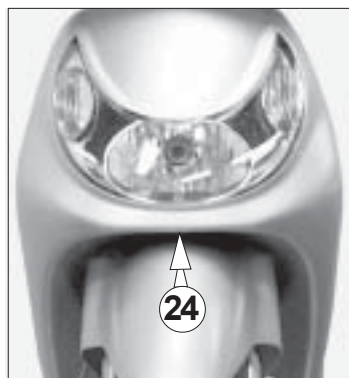
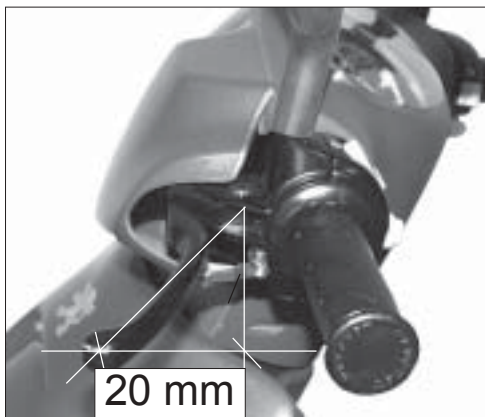
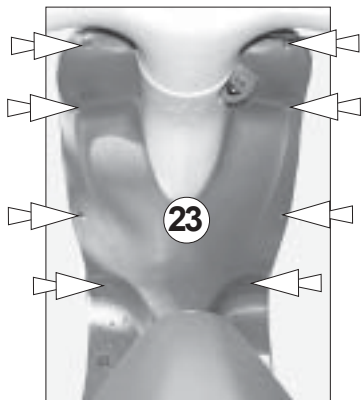
PEUGEOT MOTORCYCLES

Recommande
 Recommends
 Empfiehlt
 Raccomanda
 Recomienda

Beveelt de volgende oliesoorten aan
 Rekomenderar
 Recomenda
 Suosittelee
 Anbefaler



2-T SPECIAL (semi synthétique)
 2-T SPECIAL (semi synthetic)
 2T SPECIAL (halbsynthetisches)
 2-T SPECIAL (semi sintético)
 2T SPECIAL(semi synthétische)
 2-T SPECIAL (semi synthetic)
 2T SPECIAL (halvsyntetisk)
 2-T SYNTHETIC





Information

Information	2-3
Equipment	4
Instrument panel	4
Electronic instrument panel	5
Switch	5
Petrol / Oil	6
Battery / Fuse	6
Lighting / Signalling	6
Starting the engine	7
Driving / Spark plug	7
Braking	7
Integral braking	8
Tyres	8
Transponder	8
Specifications	9